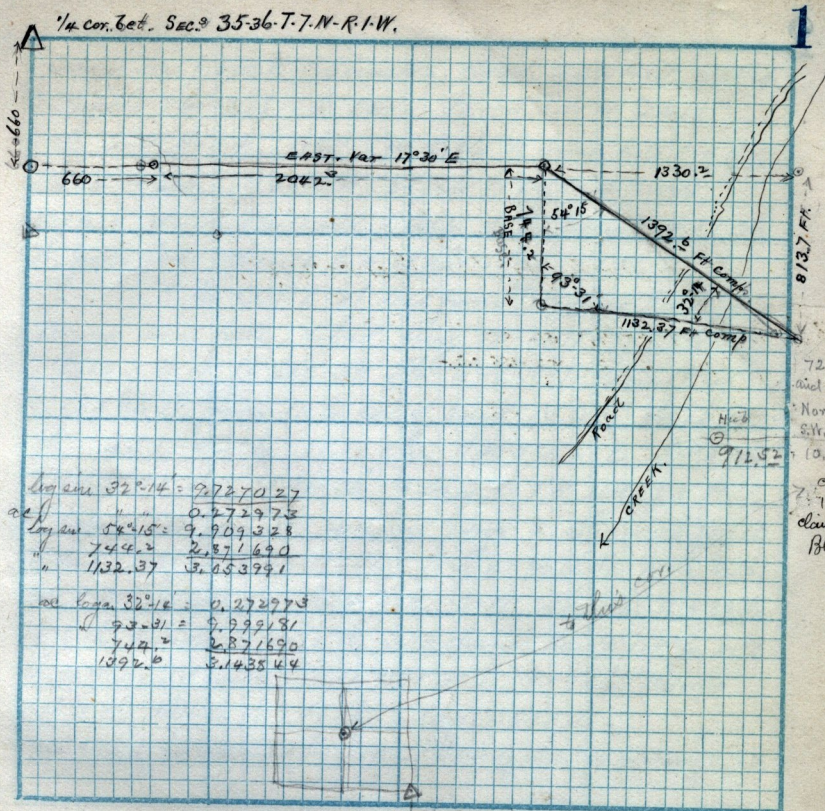


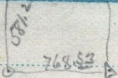
1/4 Cor. 6<sup>th</sup> Sec. 35-36-T-7-N-R-1-W.



log sine 32°14'	=	9.727027
cos "	=	0.272973
log sine 54°15'	=	9.909328
" 74°42'	=	2.1371690
" 1132.37	=	3.153991
log sine 32°14'	=	0.272973
cos 54°31'	=	9.999181
744.2	=	2.871690
1092.0	=	3.143544

72.5 W  
and 163.7  
North to  
S.W. Cor. of  
10. R.  
S.E.  
cor of  
10a. from  
claimed by  
Blackwell

Scale: ..... Chains per inch.



See cor  
S.E. cor. Sec 36

Copy

572° 35' W Ben Leonard Pk. from S.E. cor. T-8-N-R-1-W,  
 S 35° 01' E Edens flag Pole " " "  
 W 768.53 ft. and N 581.2 ft " " " to  
 S.E. cor of 1<sup>st</sup> 10 a tract claimed by Blackwell.

